

Example image only.

Jets™ Edge series is the latest generation of vacuum units by Jets™. Jets™ Edge XL mono is delivered with simple electromechanical controls. A contactor triggered by a vacuum switch will start and stop the pump at the pre-set level, ensuring that the system always maintains correct vacuum level.

Features:

- Simple design ensures low costs and easy operation
- Highly efficient for transporting wastewater
- Small physical footprint and low weight allows for quick and flexible installation
- High quality – extended pump life with operational reliability
- Highly recommended for commercial applications

Disclaimer

Note: Our products and services are offered and sold subject to Jets Vacuum AS' General Sales Conditions, copies of which will be furnished upon request. Information provided herein is solely for information purposes, does not constitute any warranty or representation of any kind and is subject to change without notice. We strive to reproduce product colors reasonably accurate. Without prior written approval, this document or any part of may not be reproduced in any form. Jets™, Vacuumarator™, Helivac™, VC™, VOD™, CVS™ and Softsound™ are trademarks and/or registered trademarks of Jets. © Jets AS. All rights reserved.

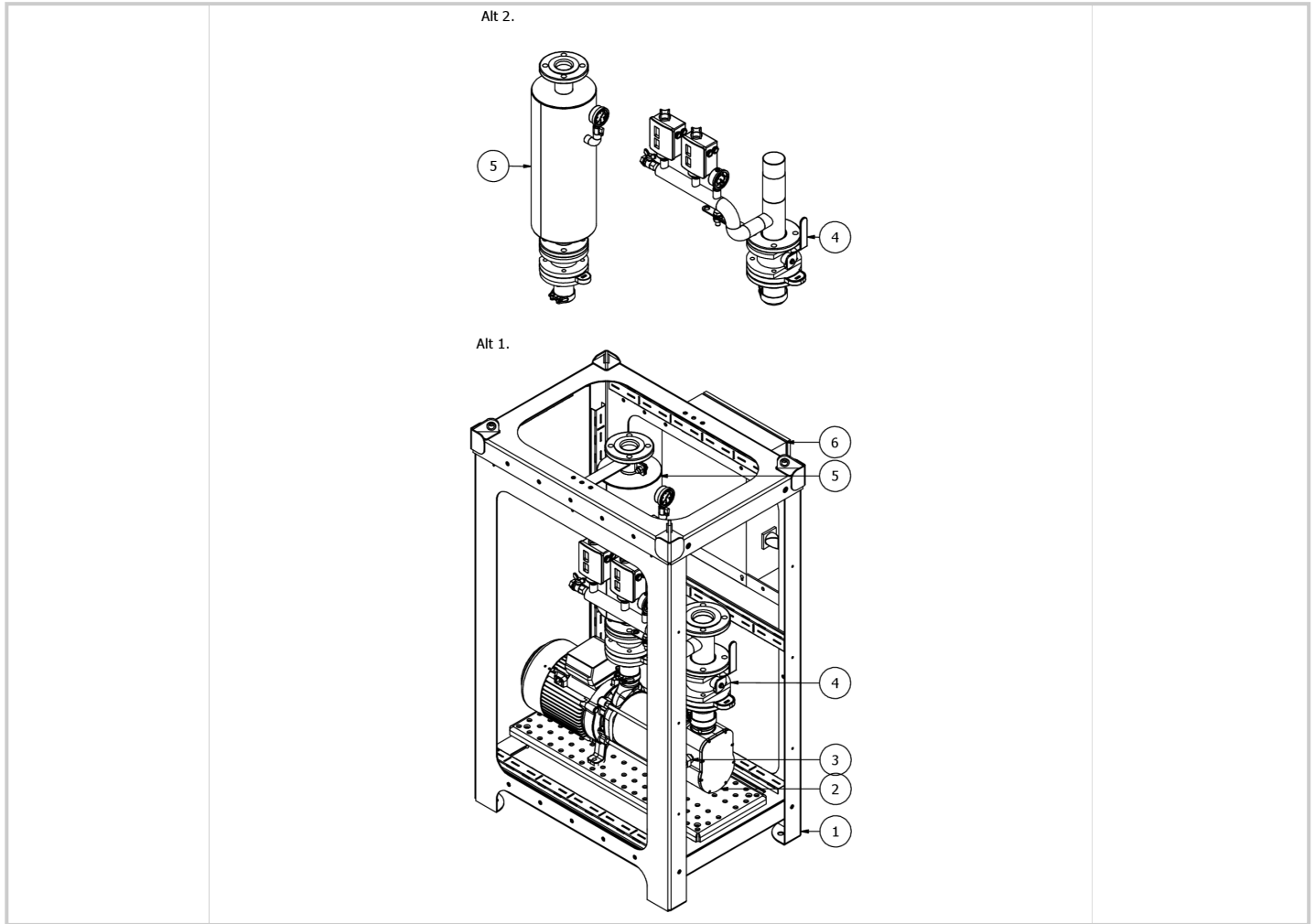
Technical Data



Pump Type.....	1 x Edge XL01 Vacuumarator™ pump
	Alternatives -
	Flange Connection ①
	Pipe Connection ②
Outside Dimensions.....	850 x 942 x 1569 mm (LxWxH)
Control Type.....	Electromechanical
Connection Inlet.....	DN65, PN10 ①
	Ø 75 ②
Connection Outlet.....	DN50, PN10 ①
	Ø 50 ②
Back Pressure.....	Max. 0.3 bar
Capacity.....	78 m³/h (ACMH) at 500 mbar abs. 50 Hz
	97 m³/h (ACMH) at 500 mbar abs. 60 Hz
	(50% Vacuum)
Ambient Temperature Range.....	+0 °C - 45 °C
Protection Class.....	IP 55
Frame material.....	S235JRG2
Weight.....	Approx. 329 kg
Wet Weight.....	Approx. 334 kg
Note:.....	For more information and capacity details refer to the pumps technical data sheet.

Operating Data

Voltage.....	Available in standard voltages from 400V to 690V
Power Consumption.....	Max. 11 kVA
Heat Dissipation.....	Approx. 0.7 kW



Components

- 1 | Foundation System see selected product
- 2 | Pump see selected product
- 3 | Flap Cleaning Valve see selected product
- 4 | Manifold System see selected product
- 5 | Vacuumator Tank System see selected product
- 6 | Control Cabinet see selected product

Only available for sale as a complete item.



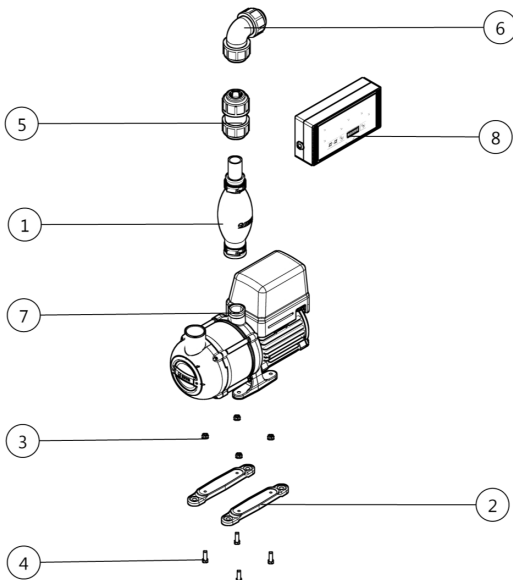
(Note: example image - delivery may vary per product selection)

Jets™ Vacuum Unit is designed as a complete solution for vacuum evacuation of waste water in a sanitary system.

- The lightweight pump effectively creates vacuum and macerates waste water to a fine pulp.
- Compact multiphase pump design with a small footprint.
- The principle of operation is vacuum on demand (VOD™).

Warranty

All products of the company are sold and all services of the company are offered subject to Jets Vacuum AS General Sales Conditions detailing warranty and terms and conditions of sale, copies of which will be furnished upon request. The information provided herein is for guidance only; it does not constitute a guarantee of the performance or specification of any individual product or component.



Technical Data



Type	VOD™ (Vacuum on Demand)
Pump Type.....	Multiphase
Capacity.....	9.5 m³/n ACMH at 500 mbar (50% vacuum)
Weight.....	Approx. 20.7 kg (dependent on selection)
Connection Inlet.....	Ø 50 mm
Connection Outlet.....	Ø 32 mm
Conformity.....	Efficiency class IE1 in accordance with exceptions given in IEC60034-30
Generic Material.....	PP

Operating Data

Voltage.....	230-240V, 12VDC, 24VDC
Note:.....	Values are dependent on pump selection.

Patents and Trademarks

Jets™, Vacuumator™, Helivac™, VC™, VOD™, CVS™ and Softsound™ are trademarks and/or registered trademarks of Jets. © Copyright 2011, Jets AS.

Disclaimer

Product color reproduction is as near to actual color as product methods allow. All rights reserved. Jets Vacuum AS has a policy of continuous improvement on its products and reserves the right to change materials and specifications without notice. Information herein is current at the time of printing and is subject to change without notice. No part of this document may be reproduced in any form by any means without prior written approval of Jets Vacuum AS.

Options

Optional functions compatible with this product.

- VPAC: Vacuumator™ Pump AC
- VPDC: Vacuumator™ Pump DC

Components

Construction Characteristics

① Vacuumator Tank Kit.....	02U016035*
② Damper for Ultima 200 series".....	02U016033*
③ Lock nut w/flange.....	036232910*
④ Screw, M6x25.....	036305010*
⑤ Union with clamping ring.....	034512531*
⑥ Elbow with clamping ring.....	034512541*
⑦ Vacuumator™.....	See options listed above
⑧ Control System.....	Product Selection

** Component/s available as replacement parts.*

Accessories

Construction Characteristics

Vacuum Transmitter.....	032318571
Adapter.....	013101302
Connector w/cable 2m.....	121200401
Pipe Clamp, ø50mm - 1/2".....	034233040
Compensator Ø50mm.....	034307100
Extension Cable 5m.....	121516216
Extension Cable 10m.....	121516217



Example image only.

Jets™ Vacuum Unit is designed as a complete solution for vacuum transportation of wastewater in a sanitary system.

- The lightweight pump effectively creates vacuum and macerates wastewater to a fine pulp.
- Compact multiphase pump designed with a small footprint.
- Constant vacuum system (CVS™) operating principle.

Technical Data



Type	CVS™ (Constant Vacuum System)
Pump Type.....	Multiphase
Capacity.....	9.5 m³/h (ACMH) at 500 mbar abs. 50 Hz 14 m³/h (ACMH) at 500 mbar abs. 60 Hz* (50% Vacuum)

Note:..... * Operating the pump at 60Hz requires a software change on the frequency converter.

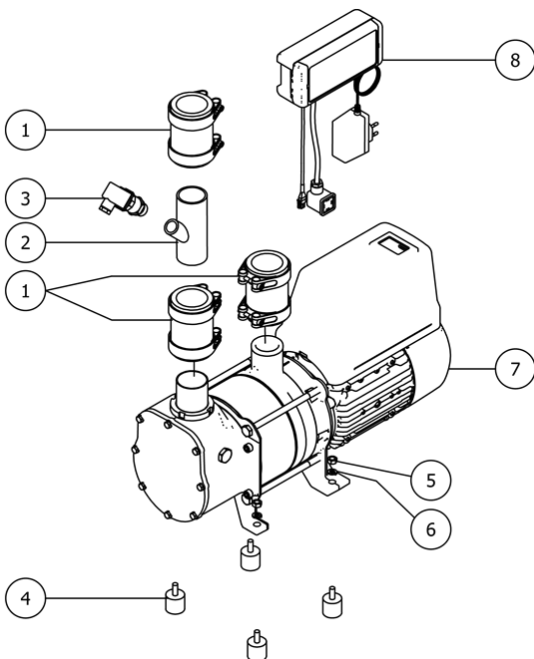
Outside Dimensions.....	637 x 214 x 502 mm (LxWxH)
Connection Inlet.....	Ø 50 mm
Connection Outlet.....	Ø 50 mm
Back Pressure.....	Max. 0.3 bar
Ambient Temperature Range.....	+0 °C - 40 °C
Net Weight.....	41.00 kg

Operating Data

Power Supply.....	230VAC
Earth Leakage Current.....	0.7 mA
Recommended Circuit Breaker.....	C16 A
Power Consumption.....	Max. 2.1kW
Heat Dissipation.....	Approx. 0.5 kW

Disclaimer

Note: Our products and services are offered and sold subject to Jets Vacuum AS' General Sales Conditions, copies of which will be furnished upon request. Information provided herein is solely for information purposes, does not constitute any warranty or representation of any kind and is subject to change without notice. We strive to reproduce product colors reasonably accurate. Without prior written approval, this document or any part of may not be reproduced in any form. Jets™, Vacuumator™, Helivac™, VC™, VOD™, CVS™ and Softsound™ are trademarks and/or registered trademarks of Jets. © Jets AS. All rights reserved.



Components

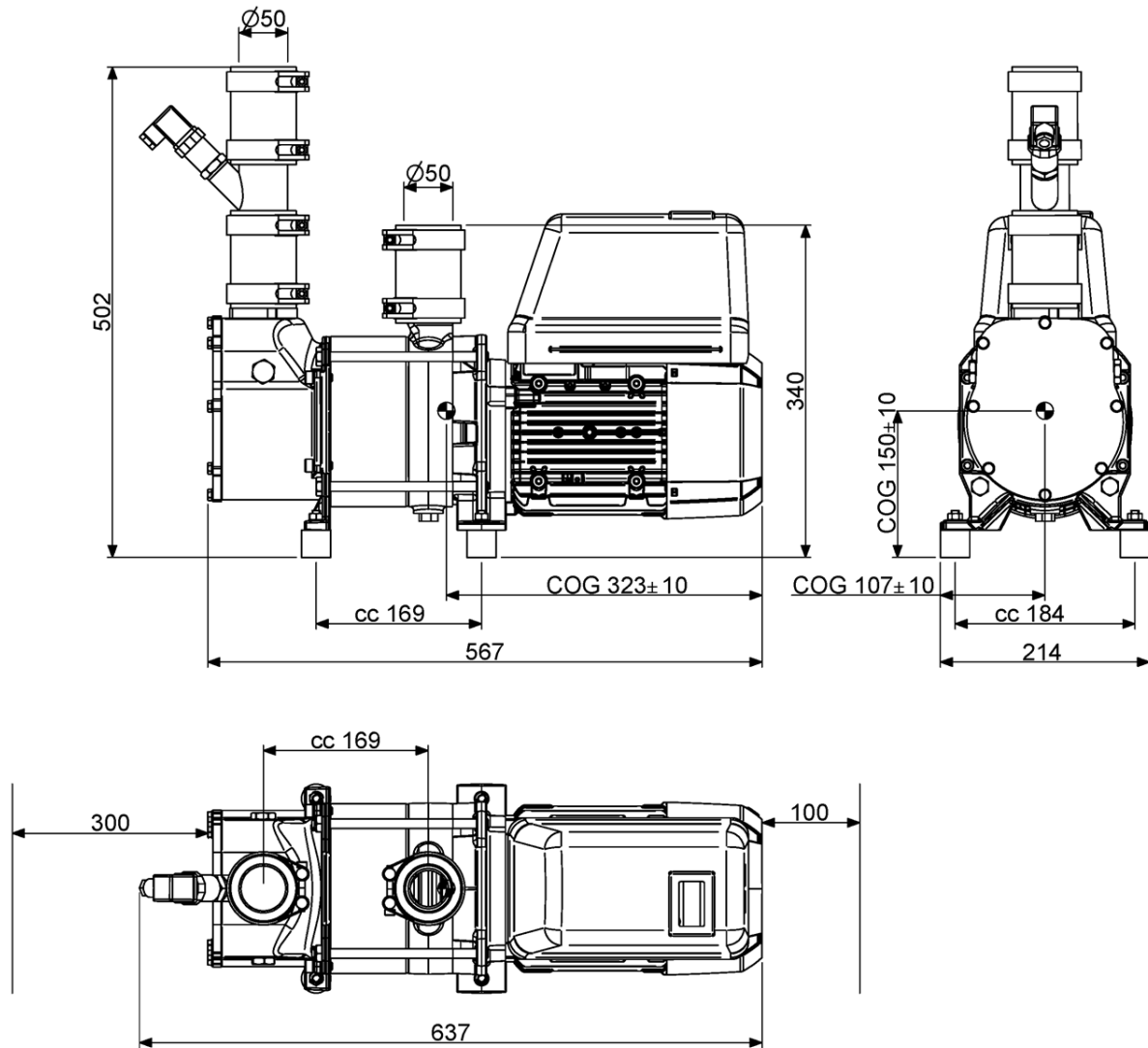
1 Compensator, ø50mm w/Hose Clip	034307100*
2 Adapter	013101302*
3 Vacuum Transmitter	032318571*
4 Vibration absorber M8	030303201*
5 Nut, M8	036303900*
6 Spring washer, M8	036307100*
7 Jets™ 15MB Vacuumator™ pump	046201501*
8 VAC Controller CVS/VIP	121315143*

Additional Components

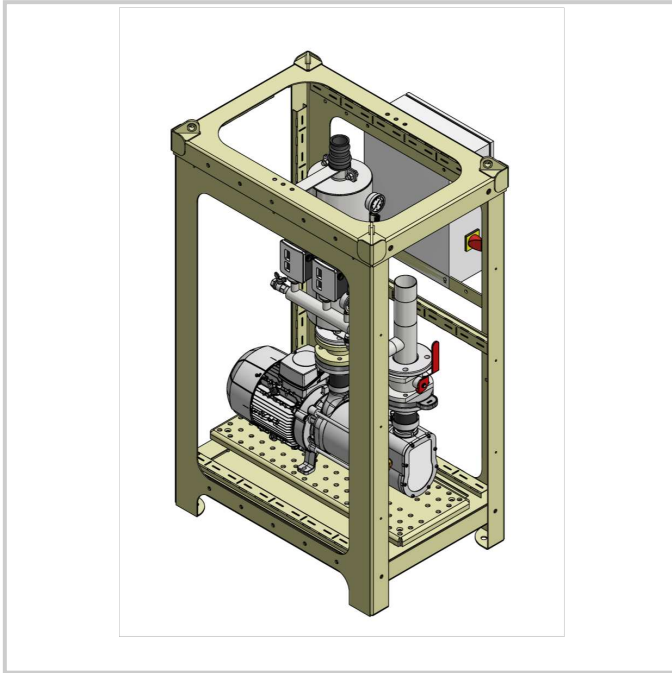
US plug adapter	121201621
UK plug adapter	121201622
AUS plug adapter	121201623

* Component/s available as replacement parts.

Dimension Drawings



Measurements given in mm.



Example image only.

Jets™ Edge series is the latest generation of vacuum units by Jets™. Jets™ Edge L mono is delivered with simple electromechanical controls. A contactor triggered by a vacuum switch will start and stop the pump at the pre-set level, ensuring that the system always maintains correct vacuum level.

Features:

- Simple design ensures low costs and easy operation
- Highly efficient for transporting wastewater
- Small physical footprint and low weight allows for quick and flexible installation
- High quality – extended pump life with operational reliability
- Highly recommended for commercial applications

Disclaimer

Note: Our products and services are offered and sold subject to Jets Vacuum AS' General Sales Conditions, copies of which will be furnished upon request. Information provided herein is solely for information purposes, does not constitute any warranty or representation of any kind and is subject to change without notice. We strive to reproduce product colors reasonably accurate. Without prior written approval, this document or any part of may not be reproduced in any form. Jets™, Vacuumarator™, Helivac™, VC™, VOD™, CVS™ and Softsound™ are trademarks and/or registered trademarks of Jets. © Jets AS. All rights reserved.

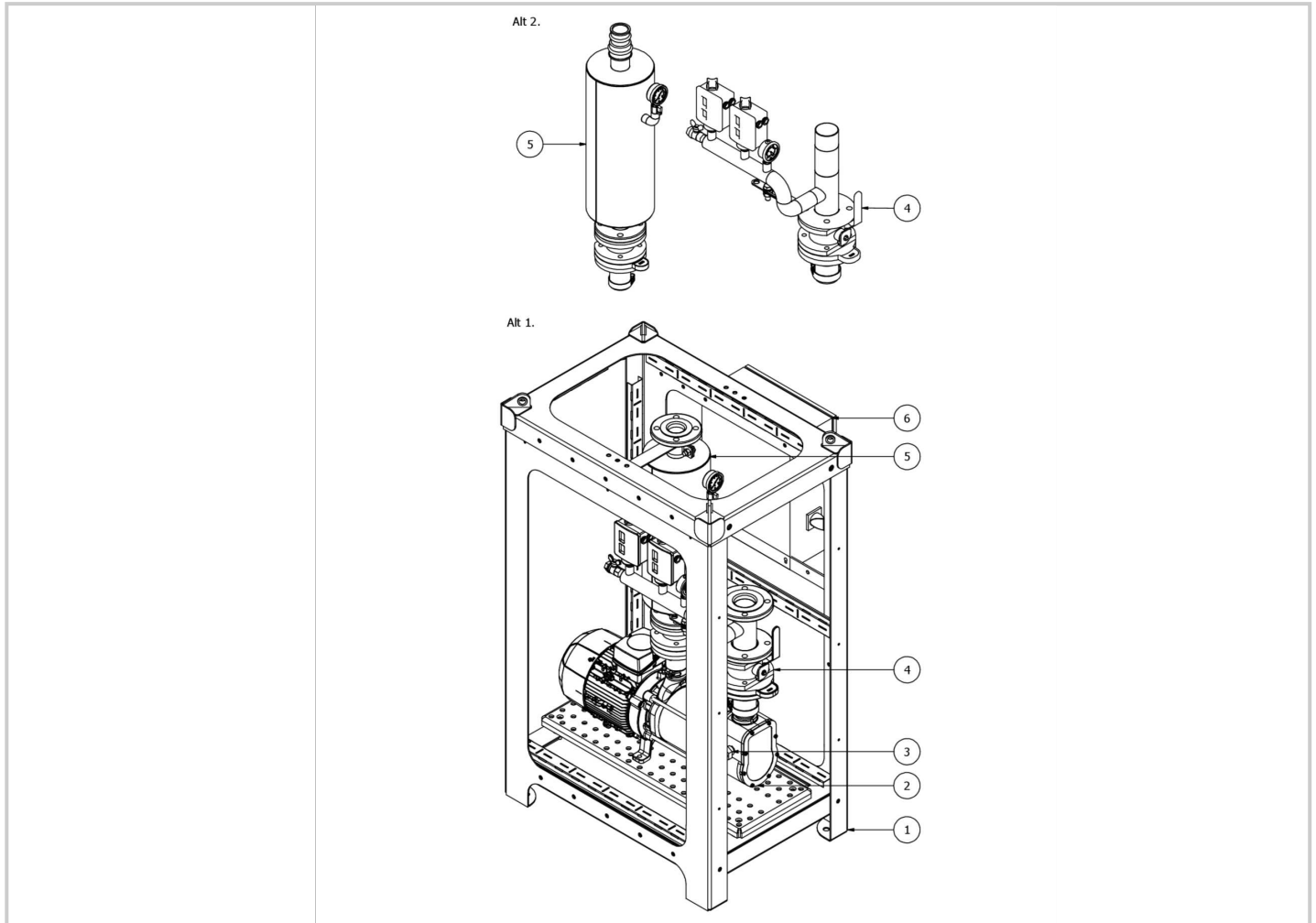
Technical Data



Pump Type.....	1 x Edge L01 Vacuumarator™ pump
	Alternatives -
	Flange Connection ①
	Pipe Connection ②
Outside Dimensions.....	850 x 942 x 1569 mm (LxWxH)
Control Type.....	Electromechanical
Connection Inlet.....	DN65, PN10 ①
	Ø 75 ②
Connection Outlet.....	DN50, PN10 ①
	Ø 50 ②
Back Pressure.....	Max. 0.3 bar
Capacity.....	62 m³/h (ACMH) at 500 mbar abs. 50 Hz
	81 m³/h (ACMH) at 500 mbar abs. 60 Hz
	(50% Vacuum)
Ambient Temperature Range.....	+0 °C - 45 °C
Protection Class.....	IP 55
Frame material.....	S235JRG2
Weight.....	Approx. 324 kg
Wet Weight.....	Approx. 328 kg
Note:.....	For more information and capacity details refer to the pumps technical data sheet.

Operating Data

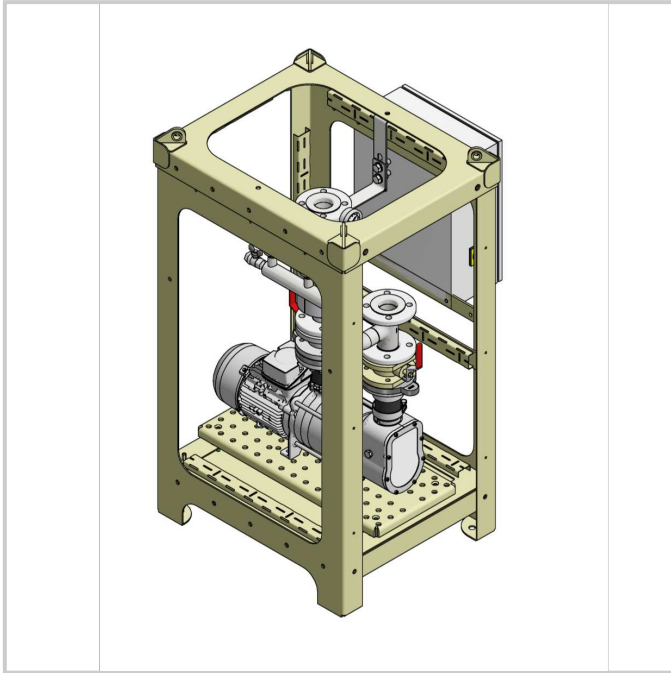
Voltage.....	Available in standard voltages from 400V to 690V
Power Consumption.....	Max. 9 kVA
Heat Dissipation.....	Approx. 0.6 kW



Components

- 1 | Foundation System see selected product
- 2 | Pump see selected product
- 3 | Flap Cleaning Valve see selected product
- 4 | Manifold System see selected product
- 5 | Vacuumator Tank System see selected product
- 6 | Control Cabinet see selected product

Only available for sale as a complete item.



Example image only.

Jets™ Edge series is the latest generation of vacuum units by Jets™. Jets™ Edge M mono is delivered with simple electromechanical controls. A contactor triggered by a vacuum switch will start and stop the pump at the pre-set level, ensuring that the system always maintains the correct vacuum level.

The unit can be delivered with two types of multiphase Vacuumarator™ pumps. The Edge M01 model is designed for maximized capacity, and can be used for all standard installations. The Edge M01D model is designed for optimal performance in more demanding installations with higher water-to-air ratios.

Features:

- Simple design ensures low costs and easy operation
- Highly efficient for transporting wastewater
- Small physical footprint and low weight allows for quick and flexible installation
- High quality – extended pump life with operational reliability
- Highly recommended for commercial applications

Disclaimer

Note: Our products and services are offered and sold subject to Jets Vacuum AS' General Sales Conditions, copies of which will be furnished upon request. Information provided herein is solely for information purposes, does not constitute any warranty or representation of any kind and is subject to change without notice. We strive to reproduce product colors reasonably accurate. Without prior written approval, this document or any part of may not be reproduced in any form. Jets™, Vacuumarator™, Helivac™, VC™, VOD™, CVS™ and Softsound™ are trademarks and/or registered trademarks of Jets. © Jets AS. All rights reserved.

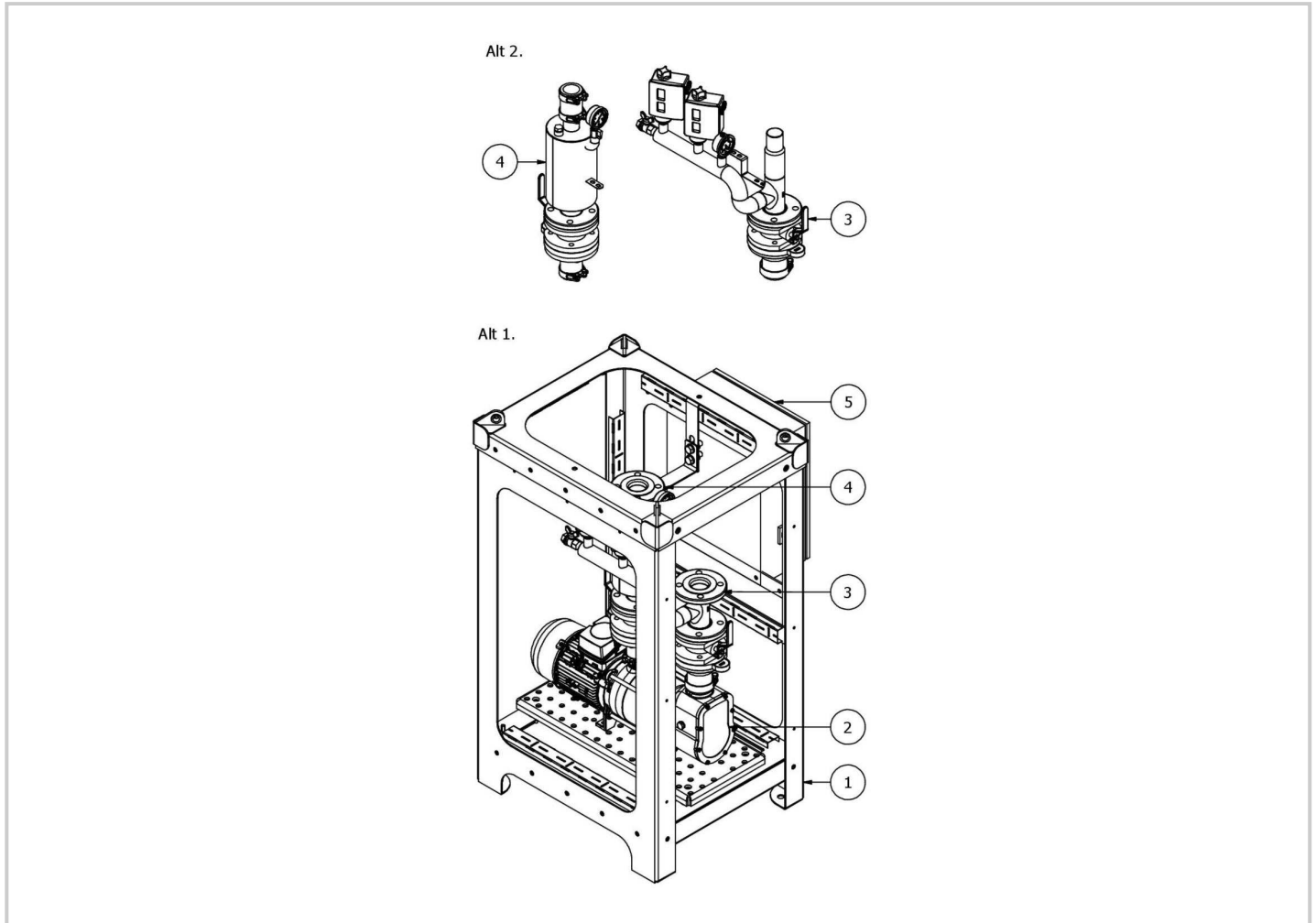
Technical Data



Pump Type.....	1 x Jets Edge M01 Vacuumarator™ pump ①
	1 x Jets Edge M01D Vacuumarator™ pump ②
	Alternatives -
	Flange Connection ①
	Pipe Connection ②
Outside Dimensions.....	861 x 782 x 1370 mm (LxWxH)
Control Type.....	Electromechanical
Connection Inlet.....	DN50, PN10 ①
	Ø 50 ②
Connection Outlet.....	DN50, PN10 ①
	Ø 50 ②
Back Pressure.....	Max. 0.3 bar
Capacity.....	①
	30 m³/h (ACMH) at 500 mbar abs. 50 Hz
	42 m³/h (ACMH) at 500 mbar abs. 60 Hz
	(50% Vacuum)
	②
	17 m³/h (ACMH) at 500 mbar abs. 50 Hz
	27 m³/h (ACMH) at 500 mbar abs. 60 Hz
Ambient Temperature Range.....	+0 °C - 45 °C
Protection Class.....	IP 55
Frame material.....	S235JRG2
Weight.....	Approx. 223 kg
Wet Weight.....	Approx. 226 kg
Note:.....	For more information and capacity details refer to the pumps technical data sheet.

Operating Data

Voltage.....	Available in standard voltages from 208V to 690V
Power Consumption.....	Max. 5 kVA
Heat Dissipation.....	Approx. 0.4 kW



Components

- 1 | Foundation System see selected product
- 2 | Pump see selected product
- 3 | Manifold System see selected product
- 4 | Vacuumator Tank System see selected product
- 5 | Control Cabinet see selected product

Only available for sale as a complete item.